

# Trail Between the Lakes - Mile 0-7

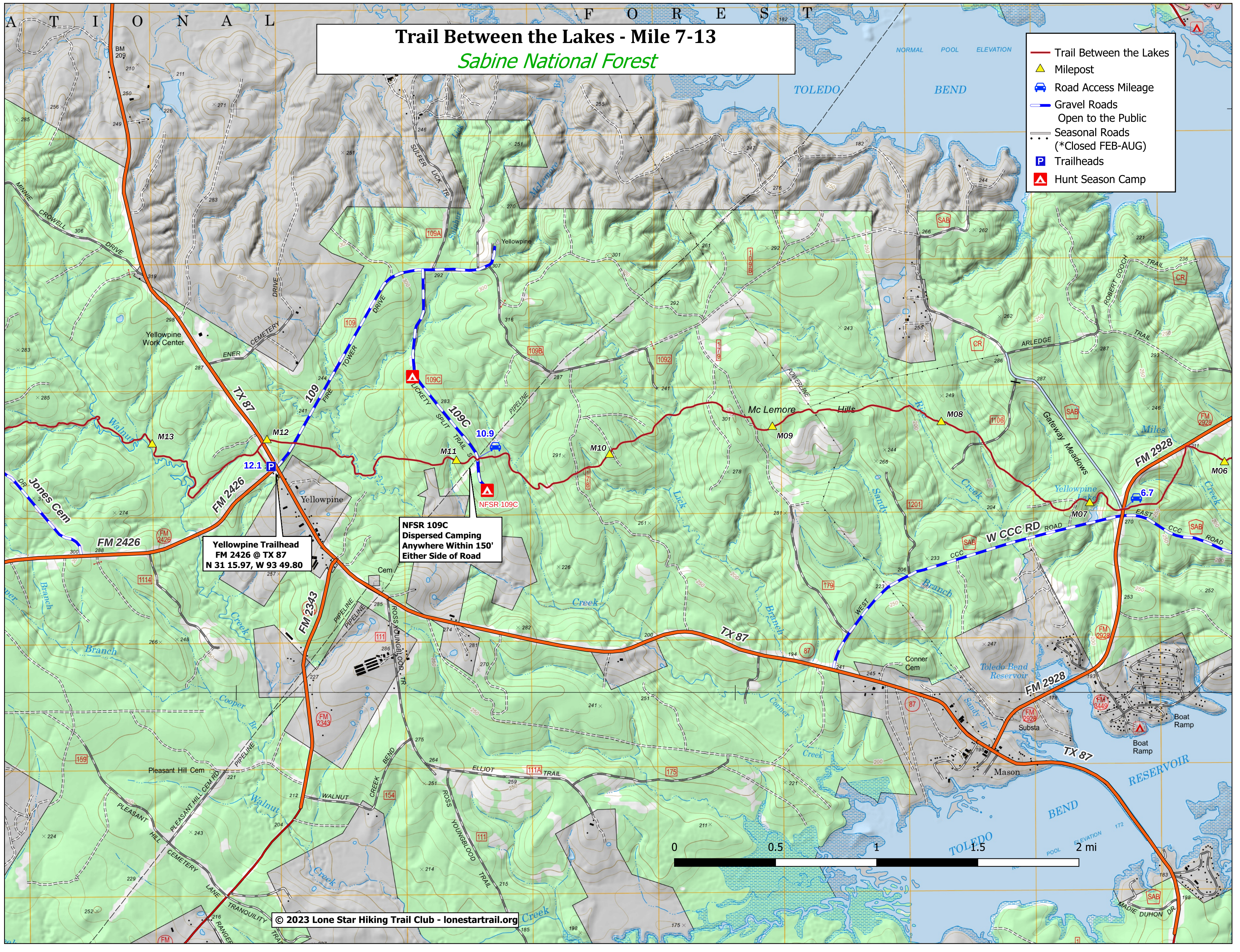
## Sabine National Forest

- Trail Between the Lakes
- Milepost
- Road Access Mileage
- Lakeview Campground
- Seasonal Roads  
(\*Closed FEB-AUG)



Lakeview Campground East Trailhead - TBTL Mile 0  
Amenities  
Camping trailer: 10 sites; RVs to 24 feet; no electric hookups  
Picnic tables: Picnic table, fire ring, and lantern post at each site  
Tent camping: Tent pads at most sites  
Toilets: Portable toilets are available within a short distance of each camping site  
Drinking water: Drinking water is available within a short distance of each camping site





**Trail Between the Lakes - Mile 7-13**  
*Sabine National Forest*

- Trail Between the Lakes
- Milepost
- Road Access Mileage
- Gravel Roads  
Open to the Public
- Seasonal Roads  
(\*Closed FEB-AUG)
- Trailheads
- Hunt Season Camp

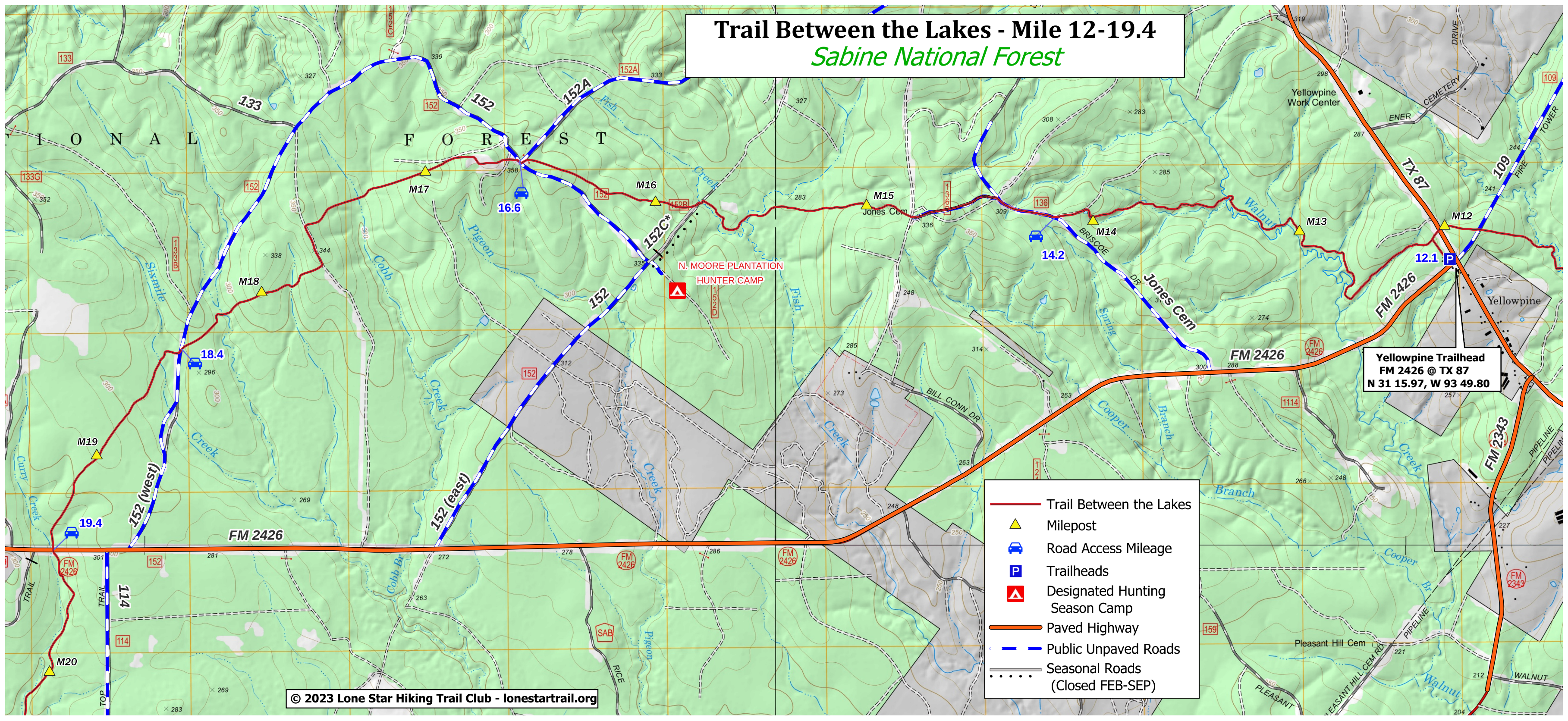
**Yellowpine Trailhead**  
FM 2426 @ TX 87  
N 31 15.97, W 93 49.80

**NFSR 109C**  
Dispersed Camping  
Anywhere Within 150'  
Either Side of Road



# Trail Between the Lakes - Mile 12-19.4

## *Sabine National Forest*





# Trail Between the Lakes Mile 19-28

*Sabine National Forest*

Trail Between the Lakes

Milepost

Road Access Mileage

Trailheads

Designated Hunting  
Season Camp

Paved Highway

Public Unpaved Roads

Seasonal Roads  
(Closed FEB-SEP)

TBTL West Trailhead  
Martha Williams Dr. @ US 96  
N 30 10.68, W 93 58.32

West TH - Mile 28

